

# Village Green

Fabric Collection by Carolyn Gavin for the Lilla Rogers Studio



# Urban Village

*Urban Village* quilt by Corey Yoder

using the *Village Green* fabric collection by Carolyn Gavin  
for the Lilla Rogers Studio & P&B Textiles

Size: 58" x 67"

## Yardage

VGRE 571 MU	1 yard
VGRE 577 Z	1 1/2 yards
VGRE 573 B, VGRE 573 Y, VGRE 575 B, VGRE 576 B, VGRE 576 G, VGRE 576 Z, VGRE 577 G, VGRE 577 R	1/3 yard ea.
VGRE 572 B, VGRE 572 Z, VGRE 575 P	1/4 yard ea.
VGRE 574 B, VGRE 574 P, VGRE 577 B	1/8 yard ea.
CSNEW (white solid)	2 yards
Backing: any VGRE fabric	3 3/4 yards
Paper backed fusible web	

## Cutting

Keep each set of house pieces and window/door pieces separate.

### From VGRE 571 MU, cut:

- (6) 4 1/2" x 42" outer-border strips

### From VGRE 577 Z, cut:

- (7) 2 1/4" x 42" binding strips
- (6) 1 1/2" x 42" inner-border strips
- (4) 1 1/2" x 2" rectangles (windows; 2 sets)
- (2) 1 1/2" x 5" rectangles (doors; 2 sets)
- (2) 3 1/2" squares
- (8) large tree trunk appliqués, prepared with fusible web
- (8) 1/2" x 3 1/4" small tree trunk appliqués, prepared with fusible web
- (1) bird appliqué, prepared with fusible web
- (16) bird beak appliqués, prepared with fusible web

### From VGRE 572 B, cut:

- (1) 3 1/2" square
- (1) 2 1/2" x 5" rectangle (house)
- (1) 1 1/2" x 5" rectangle (house)
- (1) 2 1/2" x 4 1/2" rectangles (house)
- (2) 1 1/2" squares (house)
- (2) 1" x 3" rectangles (house)
- (1) 1 1/2" x 3" rectangle (house)
- (1) large oval tree appliqué, prepared with fusible web
- (1) small oval tree appliqué, prepared with fusible web
- (1) bird appliqué, prepared with fusible web

### From VGRE 572 Z, cut:

- (2) 3 1/2" squares
- (1) 3 1/2" x 6 1/2" rectangle (roof)
- (1) large oval tree appliqué, prepared with fusible web

- (1) small oval tree appliqué, prepared with fusible web
- (1) bird appliqué, prepared with fusible web

### From VGRE 573 B, cut:

- (3) 3 1/2" squares
- (1) 3 1/2" x 6 1/2" rectangle (roof)
- (1) 2 1/2" x 5" rectangle (house)
- (1) 1 1/2" x 5" rectangle (house)
- (1) 2 1/2" x 4 1/2" rectangles (house)
- (2) 1 1/2" squares (house)
- (2) 1" x 3" rectangles (house)
- (1) 1 1/2" x 3" rectangle (house)
- (1) 8" circle tree appliqué, prepared with fusible web
- (2) large oval tree appliqués, prepared with fusible web
- (1) bird appliqué, prepared with fusible web

### From VGRE 573 Y, cut:

- (3) 3 1/2" squares
- (1) 2 1/2" x 5" rectangle (house)
- (1) 1 1/2" x 5" rectangle (house)
- (1) 2 1/2" x 4 1/2" rectangles (house)
- (2) 1 1/2" squares (house)
- (2) 1" x 3" rectangles (house)
- (1) 1 1/2" x 3" rectangle (house)
- (1) 8" circle tree appliqué, prepared with fusible web
- (1) small oval tree appliqué, prepared with fusible web
- (2) bird appliqués, prepared with fusible web

### From VGRE 574 B, cut:

- (2) 3 1/2" squares
- (1) 3 1/2" x 6 1/2" rectangle (roof)
- (1) bird appliqué, prepared with fusible web

### From VGRE 574 P, cut:

- (2) 3 1/2" squares
- (1) 3 1/2" x 6 1/2" rectangle (roof)
- (1) bird appliqué, prepared with fusible web

### From VGRE 575 B, cut:

- (3) 3 1/2" squares
- (2) 1 1/2" x 2" rectangles (windows)
- (1) 1 1/2" x 5" rectangle (door)
- (1) 2 1/2" x 5" rectangle (house)
- (1) 1 1/2" x 5" rectangle (house)
- (1) 2 1/2" x 4 1/2" rectangles (house)
- (2) 1 1/2" squares (house)
- (2) 1" x 3" rectangles (house)
- (1) 1 1/2" x 3" rectangle (house)
- (1) 8" circle tree appliqué, prepared with fusible web
- (1) large oval tree appliqué, prepared with fusible web
- (1) bird appliqué, prepared with fusible web



**From VGRE 575 P:**

- (1) 3 1/2" square
- (2) 1 1/2" x 2" rectangles (windows)
- (1) 1 1/2" x 5" rectangle (door)
- (2) large oval tree appliqué, prepared with fusible web
- (1) small oval tree appliqué, prepared with fusible web
- (1) bird appliqué, prepared with fusible web

**From VGRE 576 B, cut:**

- (2) 3 1/2" squares
- (1) 3 1/2" x 6 1/2" rectangle (roof)
- (1) 8" circle tree appliqué, prepared with fusible web
- (1) bird appliqué, prepared with fusible web

**From VGRE 576 G, cut:**

- (2) 3 1/2" squares
- (1) 3 1/2" x 6 1/2" rectangle (roof)
- (2) 1 1/2" x 2" rectangles (windows)
- (1) 1 1/2" x 5" rectangle (door)
- (1) 8" circle tree appliqué, prepared with fusible web
- (2) small oval tree appliqué, prepared with fusible web
- (1) bird appliqué, prepared with fusible web

**From VGRE 576 Z, cut:**

- (2) 3 1/2" squares
- (1) 3 1/2" x 6 1/2" rectangle (roof)
- (2) 1 1/2" x 2" rectangles (windows)
- (1) 1 1/2" x 5" rectangle (door)
- (1) 2 1/2" x 5" rectangle (house)
- (1) 1 1/2" x 5" rectangle (house)
- (1) 2 1/2" x 4 1/2" rectangles (house)
- (2) 1 1/2" squares (house)
- (2) 1" x 3" rectangles (house)
- (1) 1 1/2" x 3" rectangle (house)
- (1) 8" circle tree appliqué, prepared with fusible web
- (1) small oval tree appliqué, prepared with fusible web
- (1) bird appliqué, prepared with fusible web

**From VGRE 577 B, cut:**

- (2) 3 1/2" squares
- (1) 2 1/2" x 5" rectangle (house)
- (1) 1 1/2" x 5" rectangle (house)
- (1) 2 1/2" x 4 1/2" rectangles (house)
- (2) 1 1/2" squares (house)
- (2) 1" x 3" rectangles (house)
- (1) 1 1/2" x 3" rectangle (house)
- (1) bird appliqué, prepared with fusible web

**From VGRE 577 G, cut:**

- (2) 3 1/2" squares
- (1) 3 1/2" x 6 1/2" rectangle (roof)
- (2) 1 1/2" x 2" rectangles (windows)
- (1) 1 1/2" x 5" rectangle (door)
- (1) 8" circle tree appliqué, prepared with fusible web
- (1) bird appliqué, prepared with fusible web

**From VGRE 577 R:**

- (3) 3 1/2" squares
- (2) 1 1/2" x 2" rectangles (windows)
- (1) 1 1/2" x 5" rectangles (door)
- (2) 2 1/2" x 5" rectangles (house)
- (2) 1 1/2" x 5" rectangles (house)
- (2) 2 1/2" x 4 1/2" rectangles (house)
- (4) 1 1/2" squares (house)
- (4) 1" x 3" rectangles (house)
- (2) 1 1/2" x 3" rectangles (house)
- (1) 8" circle tree appliqué, prepared with fusible web
- (1) large oval tree appliqué, prepared with fusible web
- (1) small oval tree appliqué, prepared with fusible web
- (1) bird appliqué, prepared with fusible web

**From CSNE W (white), cut:**

- (4) 12 1/2" x 42" strips; cut into (8) 12 1/2" squares and
- (8) 6 1/2" x 12 1/2" rectangles
- (2) 3 1/2" x 42" strips; cut into (16) 3 1/2" squares
- (4) 1 1/2" x 42" strips; cut into (16) 1 1/2" x 9 1/2" rectangles
- (2) 3 1/2" x 42 strips. Piece the strips to make (1) 3 1/2" x 48 1/2" strip.

## Making the Tree Blocks

For the 8" circle trees, use an 8"-diameter plate or a compass to make an 8" circle. Use the templates provided for the large oval trees, small oval trees, large tree trunk, and bird.

**1.** Following the manufacturer's instructions, trace eight 8" circles, eight large oval trees, eight small oval trees, eight tree trunks, sixteen birds, sixteen bird beaks, and eight 1/2" x 3 1/4" small tree trunks onto the paper side of the fusible web. Roughly cut out each shape about 1/4" outside the drawn lines.

**2.** Referring to the cutting list, fuse each shape to the wrong side of the fabrics as indicated. Cut out each shape on the drawn lines and remove the paper backing

**3.** Center and fuse a large circle tree on each white 12 1/2" square. Fuse a large tree trunk atop the circle as shown in the photo. Make eight blocks.

**4.** Center and fuse a small tree trunk, a large oval tree, and then a small oval tree on each white 6 1/2" x 12 1/2" rectangle. Make eight blocks.

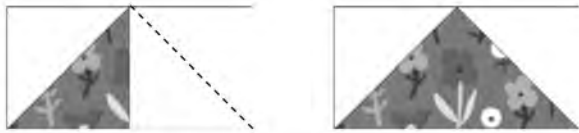
**5.** Position the birds on the white 3 1/2" x 48 1/2" strip, placing a bird 1/2" from each end of the strip and spacing the remaining birds an equal distance apart. Place a beak under each bird and fuse bird/beak in place.

**6.** Finish the raw edges of each appliqué shape with a decorative stitch such as a satin or buttonhole stitch.

## Making the House Blocks

Referring to the photo for placement guidance, select a set of house pieces, a set of window/door pieces, and a roof rectangle for each block.

**7.** Draw a diagonal line from corner to corner on the wrong side of each white  $3\frac{1}{2}$ " square. Place a marked square on one end of a roof rectangle, right sides together. Sew on the drawn line and trim the excess corner fabric leaving a  $\frac{1}{4}$ " seam allowance. Press the seam allowances toward the resulting triangle. Place a marked square on the other end of the rectangle as shown. Sew on the marked line, trim, and press. Make a total of eight roof units.



**8.** Join a house  $1\frac{1}{2}$ " square and a window  $1\frac{1}{2}$ " x  $2$ " rectangle to make a window unit. Repeat to make a second window unit.

**9.** Join two house  $1$ " x  $3$ " rectangles, two window units, and one house  $1\frac{1}{2}$ " x  $3$ " piece as shown to make a  $3$ " x  $4\frac{1}{2}$ " unit.

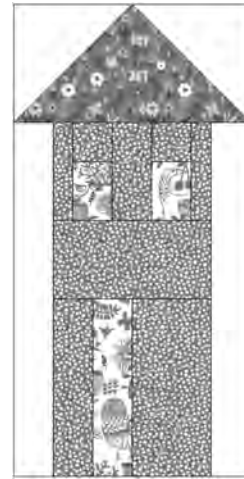


**10.** Sew a house  $2\frac{1}{2}$ " x  $4\frac{1}{2}$ " rectangle to the bottom of the unit from step 9 to complete the top half of a house.

**11.** Sew a house  $1\frac{1}{2}$ " x  $5$ " to a door  $1\frac{1}{2}$ " x  $5$ " rectangle. Then add a house  $2\frac{1}{2}$ " x  $5$ " rectangle to the other side of the door rectangle to make the bottom half of a house.

**12.** Sew the top half from step 10 to the bottom half from step 11 to complete the house unit.

**13.** Sew white  $1\frac{1}{2}$ " x  $9\frac{1}{2}$ " rectangles to opposite sides of the house unit. Then sew the roof unit to the top of the house unit to complete the block. The block should measure  $6\frac{1}{2}$ " x  $12\frac{1}{2}$ ". Repeat the process to make a total of eight house blocks.



## Quilt Top Assembly

Referring to the photo for placement guidance throughout.

**14.** Join four large circle tree blocks to make a row. Repeat to make a second row.

**15.** Randomly join sixteen assorted  $3\frac{1}{2}$ " squares to make a row. Repeat to make a second row.

**16.** Alternately join four oval tree blocks and four house blocks to make a row. Repeat to make a second row.

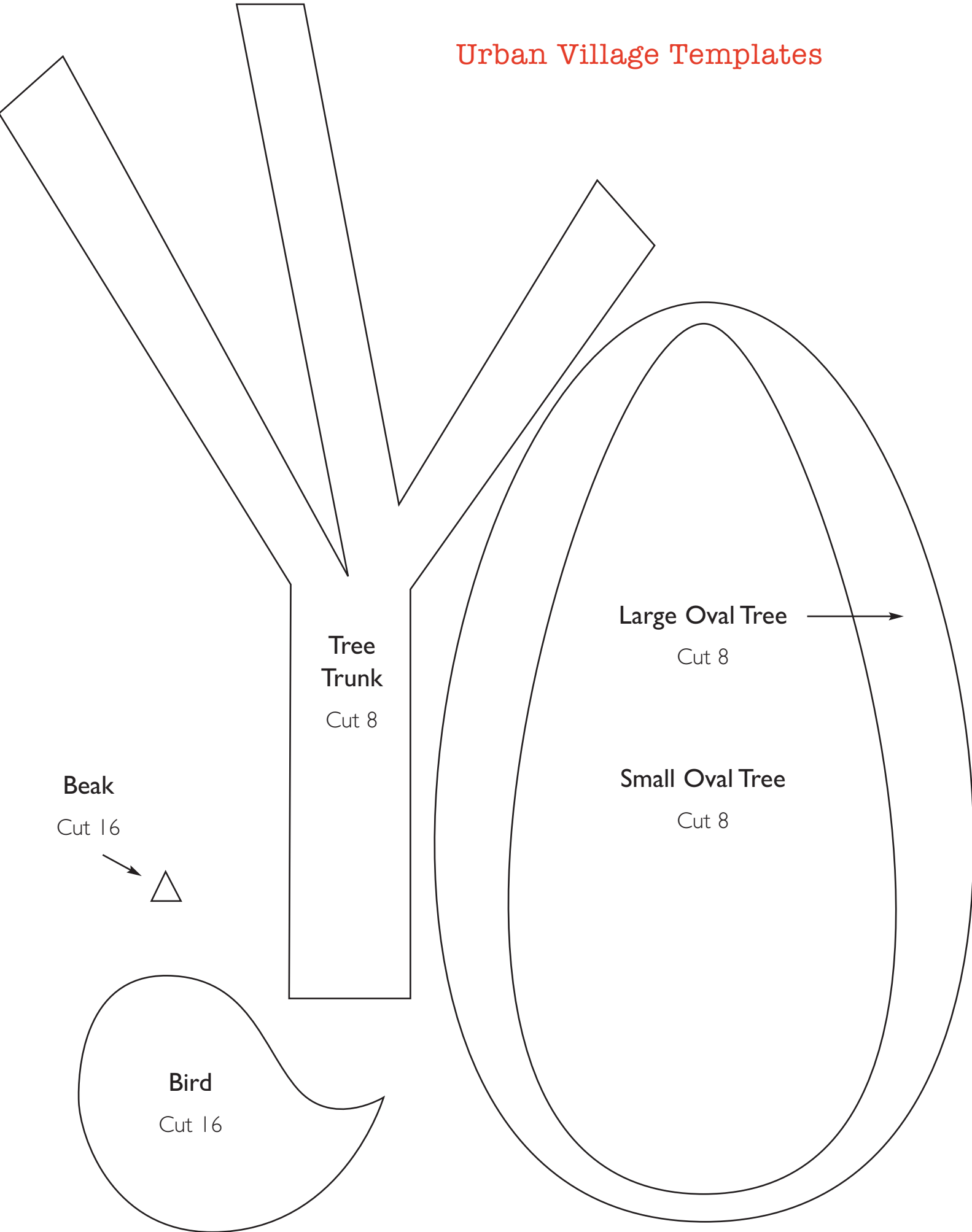
**17.** Join the rows from steps 14–16 and the appliquéd bird strip as shown in the photo to complete the quilt top center. The quilt top should measure  $48\frac{1}{2}$ " x  $57\frac{1}{2}$ ".

**18.** Join the 577 Z ( $1\frac{1}{2}$ "-wide) inner-border strips together end to end. From the pieced strip, cut two  $57\frac{1}{2}$ "-long strips and sew them to opposite sides of the quilt top. From the remaining pieced strip, cut two  $50\frac{1}{2}$ "-long strips and sew them to the top and bottom of the quilt top to complete the inner border.

**19.** Join the 571 MU outer-border strips together end to end. From the pieced strip, cut two  $59\frac{1}{2}$ "-long strips and sew them to opposite sides of the quilt top. From the remaining pieced strip, cut two  $58\frac{1}{2}$ "-long strips and sew them to the top and bottom of the quilt top to complete the inner border.

**20.** Layer the quilt top with batting and backing; baste. Quilt as desired. Using the 577 Z ( $2\frac{1}{4}$ "-wide) strips, bind the edges to finish.

# Urban Village Templates





# Village Green

Fabric Collection by **Carolyn Gavin**  
for the Lilla Rogers Studio



VGRE 571 MU



VGRE 572 B



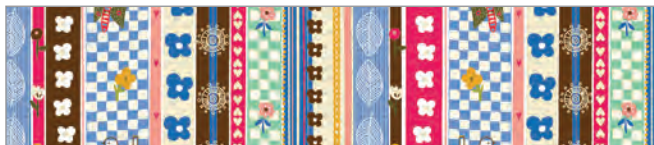
VGRE 572 Z



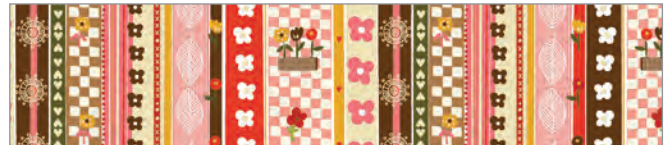
VGRE 573 B



VGRE 573 Y



VGRE 574 B



VGRE 574 P



VGRE 575 B



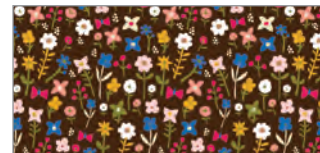
VGRE 575 P



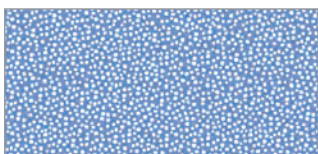
VGRE 576 B



VGRE 576 G



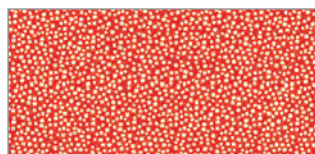
VGRE 576 Z



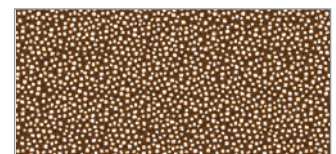
VGRE 577 B



VGRE 577 G



VGRE 577 R



VGRE 577 Z



**P&B Textiles** ♦ [www.pbtex.com](http://www.pbtex.com) ♦ 800-351-9087  
45-47 Washington St, Pawtucket, RI 02860 ♦ 237 W. 35th St, 11th floor, New York, NY 10001

△ 100% cotton ♦ Cold wash & dry ♦ 43"/44" ♦ Colors may vary due to printing process  
All fabrics shown at 50% scale except where indicated otherwise.